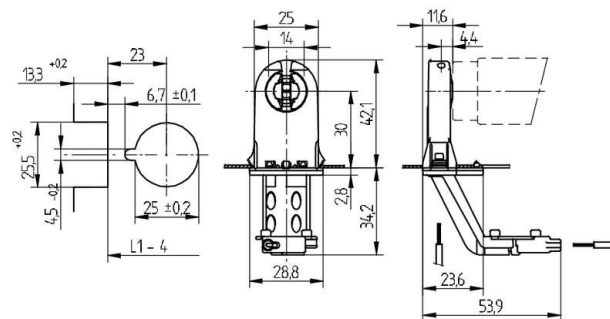




Lampholders and starter holders

26.291.5011

G13 Push through lampholders



L1-4: Recommended dimension - The distance between the cut-outs and the tolerance should be governed by the dimensions of the respective lamps and luminaires.

colour	pkg.	wt.	part no.
white	250	10 g	26.291.5011.50

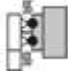

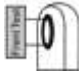


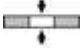

With starter holder

Approval: additional cULus (660W /600V)

Lamp centre: 30 mm
Push fixing

Housing: PC
Rotor: PBT

- For cut-outs open at the rear
- A pair of lampholders provides a lamp length tolerance compensation of 3 mm

T 130	Tm 110					 18 AWG 0.5 - 1.0 mm ²	 0.4 - 2.0	
-------	--------	---	---	---	--	--	--	---

Document generated on: Th, 9. February 2017 - 13:20